

NEW JERSEY RED-LIGHT SAFETY CAMERA FACTS



In New Jersey...

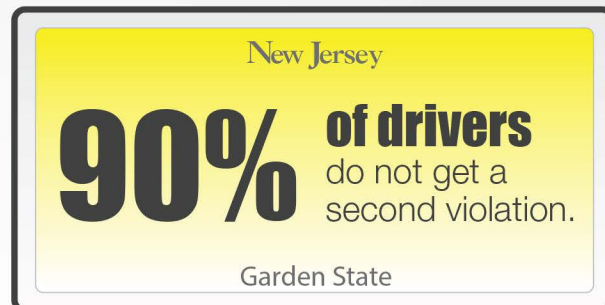
A **traffic crash** occurs every **2 minutes**.



An **injury traffic crash** occurs every **9 minutes**.



A **fatal traffic crash** occurs every **17 hours**.



9 out of 10 drivers who receive a red-light running violation do not get another, indicating that **90% change their behavior** after the first violation.

Since 2010, violations per camera decreased

44%



This change indicates **drivers are stopping on red.**

National Research, Inc. finds

58% of New Jersey motorists supported the continued use of red-light safety cameras in the Garden State.



Since 2011, **videos from red-light safety cameras have been used by law enforcement** nearly **500 times**

to aid in investigations for traffic crashes, crimes and other unlawful incidents.



New Jersey yellow light intervals are determined by NJDOT according to nationally accepted standards. **Municipalities do not have discretion to determine the length of the yellow.**

The 3-6 second duration is based on many factors including: **traffic volume, speed, roadway grade and intersection design.**

Since the red-light safety camera program began, **more than**

\$5.4 million

in paid fines has been used to fund:

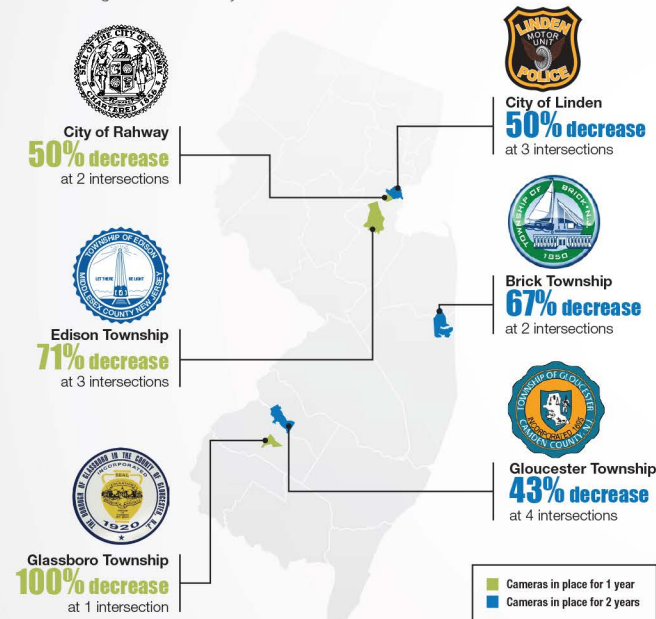
- Medical research for autism, **spinal cord injuries** and brain injuries
- Operation of a statewide **traffic ticket database**
- New equipment** for law enforcement
- Procurement of **crash data** collection systems
- Salaries and overtime** directly attributed to the enforcement activities of Safe Corridor locations

Red-light safety cameras are reducing crash-related costs by

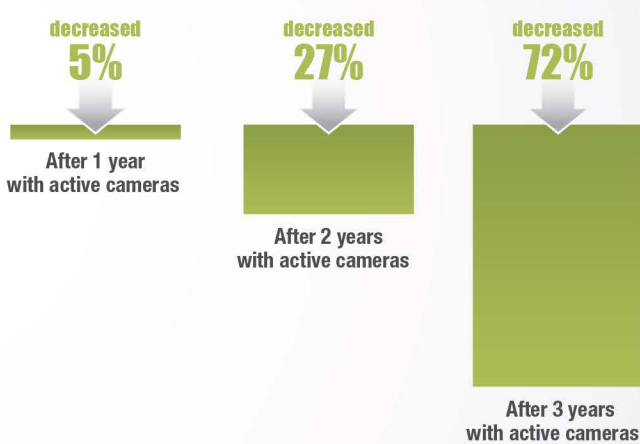
\$3,209,500



Right-Angle Crashes Reductions throughout New Jersey



STATEWIDE Total Crashes throughout New Jersey...

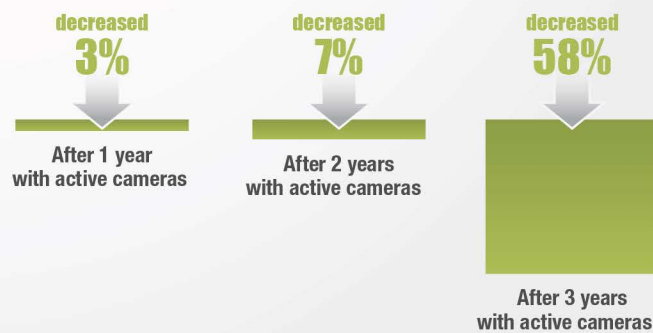


Right-Angle Crashes throughout New Jersey...

57% decrease in right-angle crashes after 2 years of cameras in operation*

86% decrease in right-angle crashes after 3 years of cameras in operation**

Rear End Crashes throughout New Jersey...



\$12 million

from the New Jersey red-light safety camera program has been used for:

- Automated Fund
- DNA Testing Fund
- Spinal Cord Research
- ATS Modernization Fund
- Brain Injury Fund
- Autism Fund
- Body Armor